



Your monthly news & updates

Cambridge Community Players, where Cambridge comes to play!

[Visit our Website](#)

WHAT'S HAPPENING AT CAMBRIDGE COMMUNITY PLAYERS

TICKETS NOW ON SALE!

OF THE FIELDS, LATELY

A Drama by David French
Directed by Jane McWilliams

A death in the family reunites the Mercer family under less than ideal circumstances. Estranged son, Ben returns home after a two year absence to find his mother and Uncle Wiff, trying to sustain his father.

Evening performances: April 15, 16, 22, 23, 29, 30
Matinee: April 24, 2016
Box Office Opens: Thursday, April 7

Purchase [tickets](#).



CORRECTION NOTICE

In last month's eNewsletter the description for **Albertine in Five Times** was incorrect. Thank you to all those who caught the error. The correct synopsis is as follows:

ALBERTINE IN FIVE TIMES

A Drama by Michel Tremblay
Directed by Robin Bennett

Playwright Michel Tremblay imagines an independent and complex French-Canadian housewife in five different decades of her life. The five actresses playing her are on stage at the same time, allowing them to interact, sharing a lifetime of memories.

We begin with Albertine at 70 moving into a senior citizens' home. It's not the best of places, but she seems ready for it. She remembers herself at 30, visiting her patient and sympathetic sister Madeline, in her summer home.

Albertine at 40, is an emotional wreck worn down by the constant fighting between her mother, her unmanageable daughter and her son who is retreating into madness. Albertine at 50 has abandoned her children and found a job and a life for herself. At 60, Albertine is shattered, confined to a small room in a hospital, hooked on drugs and wracked by guilt.

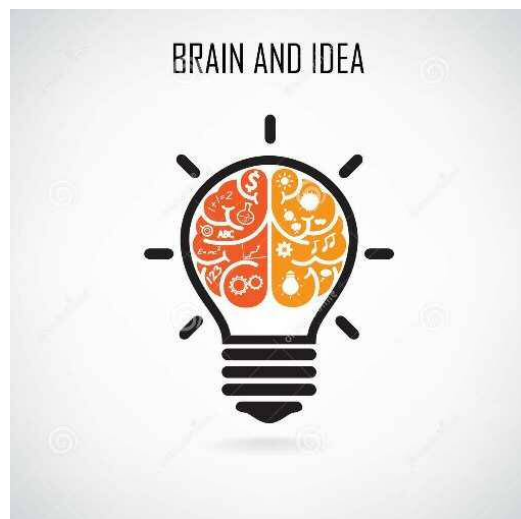
Evening performances: January 27, 28,
February 3, 4, 10 and 11, 2017
Matinee: February 5, 2017



CREATIVE THINK TANK

So this is what we are thinking... We have this amazing space, we have a block of time between seasons, we know there's amazing talent in our community and we want to bring it all together!

Cambridge Community Players (CCP) is looking for creative individuals to use our space to hone talent in theatre and the performing arts. We are committed to providing educational as well as entertainment opportunities in hopes of further deepening theatre enthusiasts passion for theater.



Just some ideas to get the creative juices flowing:

- Bring back Black Box theatre
- Share your knowledge - Lead a class
- Revive One Act Plays
- Develop new works
- Dabble in Improve
- Teach Technical Aspects
- Run a workshop in set design or stage craft
- Experiment with Poetry
- Explore Pantomime
- Musical theatre
- Take a stab at stand-up comedy
- What do you have in mind?

CCP wishes to provide a venue where you can bring your creative concepts to life. We invite playwrights, directors, actors and other theatre aficionados to explore and experiment with CCP.

Contact us to get started at galtlittletheatre@gmail.com

CAMBRIDGE COMMUNITY PLAYERS

WE ARE READY TO WELCOME YOU!

The world has changed since our group was founded in 1934. First film, then television, and now, the internet have made entertainment increasingly easy to access. So why is live theatre still relevant today?

Live theatre puts warmth, breath, and humanity back into entertainment. It reminds us that, even in this digital world, it always boils down to a human being with a story to tell. And in community theatre? Well, that storyteller could be your friend, your neighbour...even you.

**Join us for a show – or join us as a member,
we are ready to welcome you!**



Subscriptions, tickets, sponsorships and memberships are available for purchase. Reach us at at (519) 623-4070.

WHAT'S HAPPENING IN OUR COMMUNITY & BEYOND



GET INVOLVED IN SOMETHING LOCAL

5 Great Reasons to Try Community Theatre

By Shaun, Hespeler | *February 3, 2016*

It's a new year, and perhaps you are looking to try something new – expand your horizons, so to speak. Well, I'd like to suggest getting involved with your local Community Theatre as a fun, exciting new hobby. Here are five great reasons to give it a go:

1. It's a good way to expand your social horizons. Theatre attracts people of all ages, from many walks of life. Getting involved offers you a rare and wonderful chance to get to know people community you might otherwise never get a chance to meet.

Read [more](#)

THE GUELPH LITTLE THEATRE

Invites you out to see:

Sugar Bean Sisters

Written By:Nathan Sanders
Directed By:Denise Gismondi



Way down in the darkness of Buster Swamp Florida, the Nettle sisters are determined to escape spinsterhood—Willie Mae by finding a good Mormon husband, and Faye by hopping on the spaceship when the "space people," who first visited the swamp 25 years ago, return. But who is the mysterious bird-woman who sets in motion an extraordinary chain of events? A Southern gothic comedy of romance, murder and alien abduction!

Read [more](#)



ELMIRA THEATRE

Invites you out to see:

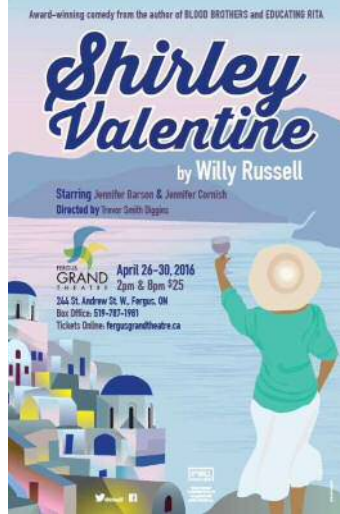
Sleepy Hollow the Musical

Written By: Vera Morris
 Lyrics By: Bill Francoeur
 Directed By: Deb Deckert
 Musical Direction By: Heather Morris

Adapted from Washington Irving's classic ghost story, here's a spooky show alive with hilarious action and dynamic music! Ichabod Crane, a socially awkward schoolmaster, comes to Sleepy Hollow where he's sure his dreams will come true when he spots the pretty Katrina Van Tassel. In an attempt to drive him away her jealous suitor plays on Ichabod's fears with tales of ghosts, including the most renowned phantom of all, the Headless Horsemen! But are they just tales....?

Purchase [tickets](#)

FERGUS GRAND THEATRE



Invites you out to see:

Shirley Valentine

Written By: Willy Russell

Directed By: Trevor Smith Diggins

The heroine in this actor's tour-de-force is an ordinary middle class English housewife. As she prepares chips and egg for dinner, she ruminates on her life and tells the wall about her husband, her children, her past, and an invitation from a girlfriend to join her on holiday in Greece to search for romance and adventure. Ultimately, Shirley does escape to Greece, has an "adventure" with a local fisherman and decides to stay. This hilariously engaging play was a hit in London and New York, performed by Pauline Collins, who later recreated her role on film garnering an Oscar nomination.

Purchase [tickets](#)

Nichole Fogarty | Cambridge Community Players | 519-623-4070
gallititletheatre@gmail.com | www.cambridgecommunityplayers.com

STAY CONNECTED

