

**CAMBRIDGE
COMMUNITY**



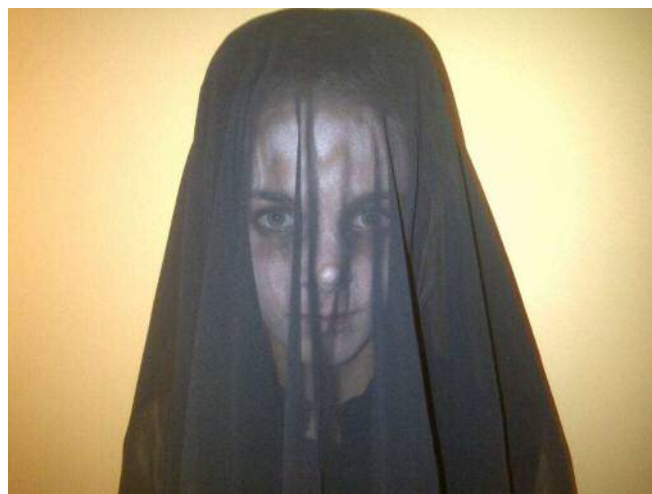
*The
Phoenix*



November 2013

Cambridge Community Players' Youth Group 'Ghost Walk' – October, 2013

Pictured (l-r) are Piper Distel, Brooke Bulmer and Isabel Skinner. Three CCP Youth Group students.



CCP Education Programs

We have launched a number of new programs and continue to run those started in the fall.

We now offer:

Theatre Tots 3.5 - 5

Theatre Tykes 6 - 7

Theatre Troupers 8 - 12

Theatre Teens 12 - 16

Theatre Teens Advanced 13 - 17

Teen Improv.

Adult Acting

Adult Improv.

Seniors Theatre - Acting

Registration is opened online for all courses at the CCP website. Members can get a jump before the information is released to the public in the Activities Guide.

Teens ran a very well attended and successful Spirit Walk at the theatre Oct. 25 - 26. Thank you to Lori, Pam, Barb and to everyone who help create this successful event.

Thank you, Warren

MEMBERS CORNER:

My life On, Off and Under the Stage

I can't remember the exact year when I became involved with Galt Little Theatre as more than part of the paying audience. But it was the last play directed by Jack Etherton (before his tragic death) - "I'll Be Back Before Midnight". Somehow, both Nita and I volunteered; she helped paint the set, and I constructed the axe that appeared to sink into the back of one of the actors. All fakery of course! And did we have fun?

Nita continued to improve her skills in set painting, eventually heading that department for many years.

I worked mainly on set construction and also headed that department for a long period. When we first began, the basement area under the stage had still not been developed, and we worked from a tiny room that is now the janitor's storage space! The present workshop was constructed at the time the auditorium was updated, raked and the stage rebuilt. It's hard to imagine set building in the old set-up, but somehow we managed.

Getting on stage was a different matter. Most people involved with the technical side wouldn't be seen dead on stage, which may be a good thing! However, strange things happen. When our pub nights used to attract 20 to 30 people every Thursday night, auditions were held the same night. As everyone knows, regardless of the play, auditions attract roughly 3 females for every male. When the cast ratio is the opposite, the Director has a problem. "Who's Life Is It Anyway?" directed by Kay Mattear, was a perfect example. It has 2 female parts and about 6 males. Rob Judd was already cast in the lead role, and John Holding in one of the other male parts, but other men were thin on the ground, so the producer was sent down to the Green Room to recruit the rest of the cast. And so I became Dr. somebody, a psychiatrist, for my stage debut. There's no doubt it is addictive and I followed this with small parts in "Our Town", "The Crucible" and several others. I even played the King in a production of "The Sleeping Beauty", a pantomime.

Nita and I still see a lot of theatre, but Galt Little Theatre gave me a unique outlook for which I am profoundly grateful.

Submitted by Peter Hunton

The Secret Grove - Opening Soon

It's almost time for another Christmas Panto! The Secret Grove, an adaptation of the Grimm faerie tale The Twelve Dancing Princesses features a fabulous cast of suitably madcap characters. We are thrilled to welcome back Cambridge Community Players favourites Bill Smith, Bill Bulmer, Warren Shaw, Tracey Biggar, Steve Robinson, Corina Dunn, Sean Nemela and Kayla Bulmer (among others) and to invite some great new talent to the team, like Duncan Quinn, Pam Silcox and Jackie Gilmar (just to name a few). With a cast of thirty-seven, more than half of them children, and an amazing team backstage (Michelle Kreitzer, stage manager, Steve Robinson, musical director, Lori Distel, assistant director and Kate Jones, wardrobe designer (this list is incomplete...I'd have to go on all day!! Roy...Dyoni!) things are progressing as planned. Lots of fun, lots of work to do, but lots of great collaboration is bringing our production together.

Bring your family for a fun, audience interactive night of theatre.

Plenty of silly, spooky fun for all.

We still do require assistance sewing, backstage and other positions. Email Shannon shannonmarkle@rocketmail.com to join this spirited and collaborative team.

The Secret Grove opens November 29th, hope to see you there!!

Out and About

For the past decade the Cambridge Libraries and Galleries' Arts and Soul Foundation has provided artistic for anyone desiring to foster mental health.

The foundation organizes arts workshops, led by qualified mentors from the community, free of charge.

This fall they are celebrating the 10th anniversary of this wonderful program in grand style Saturday, November 16, 2013 from 1PM to 4PM at the Queen's Square branch, 1North Square. Celebrations include art activities for the whole family, a presentation at 2:00pm and mentor led workshops at 1:15pm and 3:00pm.

Show your support and celebrate with this wonderful group of volunteers and participants and discover how lives have been and continue to be enriched by art. All are welcome!

The Fergus Grand Theatre celebrates its 85th anniversary this season with a stage performance of MASH. Yes, you read that right, Hawkeye, Trapper, Frank Burns, 'Hot Lips' Houlihan, Col. Henry Blake and all your other favourite characters from the movie promise that laughter will indeed be the best medicine for this production.

Performances are November 7 - 9 at 8pm and a special matinee performance, Sunday, November 10 at 2pm. Tickets can be purchased online at <http://fergusgrandtheatre.ca/>.

The Cambridge Centre for the Arts' Cookies and Kids Performing Arts Series is back. And with them they bring the Dufflebag Theatre and their production of "A Christmas Carol". Mark Sunday, Nov. 23 on your calendar. Tickets are only \$5 and are on sale at the Cambridge Centre for the Arts. Call 519-740-4681, ext. 4376 for more information.

That's all for now. See you next month.

Submitted by Bill Ashwell

CCP Play Submission Reminder



Don't forget to submit your ideas for our 2014/15 season.

For more information and a play submission form, go to our web site at

<http://www.cambridgecommunityplayers.com/Play%20Submissions-2.php>

Cambridge Community Players (Formerly Galt Little Theatre) is located in the Cambridge Arts Theatre, 47 Water St. South, Cambridge. 519-623-4076. Tickets are available on line at www.cambridgecommunityplayers.com , by phone at 519-623-4070, or at the box office.

Editor: Patsy McCleery